

\$8,000

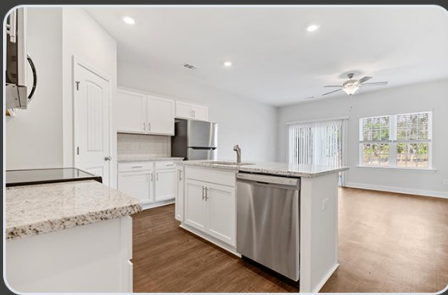
HORIZON
HOME BUILDERS

in Seller Paid Closing Costs!
with use of a preferred lender



OGEECHEE STATION

*Ogeechee Station is at the Heart of All
the Excitement in Richmond Hill!*



- Homes Starting at \$299,900
- Move-in Ready Homes Available!
- 3 BR / 2.5 BA / 1,442 SQFT
- FREE Garage Door Opener & Blinds

Parker Jennings 912.856.9568 | Meagan Mowry 912.596.0643



912.445.2230





GRAND

SAVINGS EVENT!

Quayton Station



\$10,000

IN SELLER PAID CLOSING COSTS WITH USE OF A PREFERRED LENDER

ALL HOMES INCLUDED ARE \$356,903
OR LESS AND START AT \$322,903!

21 *Homes included in
this promotion!*

Plus Free

SIDE BY SIDE STAINLESS
STEEL REFRIGERATOR



*See onsite agent for additional
promotional information*



Guyton Station

\$337,900 ~~\$354,900~~

218 Glick Way
Guyton, GA 31312

4 Bedroom 2.5 Bathrooms
2,100 sq.ft.



THE CYPRESS PLAN

THE JASMINE PLAN



UNDER CONTRACT!



\$332,900 ~~\$344,900~~

224 Glick Way
Guyton, GA 31312

4 Bedroom 2.5 Bathrooms
1,998 sq.ft.



integrity
real estate llc

Lisa Richards-Reed
912-414-4818
lisa@integritynewhomes.com

Meagan Mowry
912-596-0643

meagan@integritynewhomes.com



TOWNE PARK

527 Governor Treutlen Cir.
529 Governor Treutlen Cir.
531 Governor Treutlen Cir.



Free!

Free! Side by Side Stainless Steel Refrigerator

Free! Washer and Dryer

Free! Fenced-in Backyard

Free! Blinds

Plus! \$10k in seller paid closing costs when using a preferred lender.

