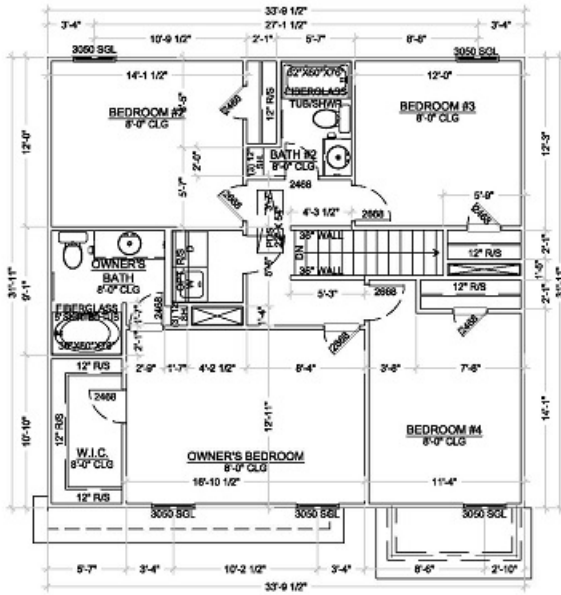


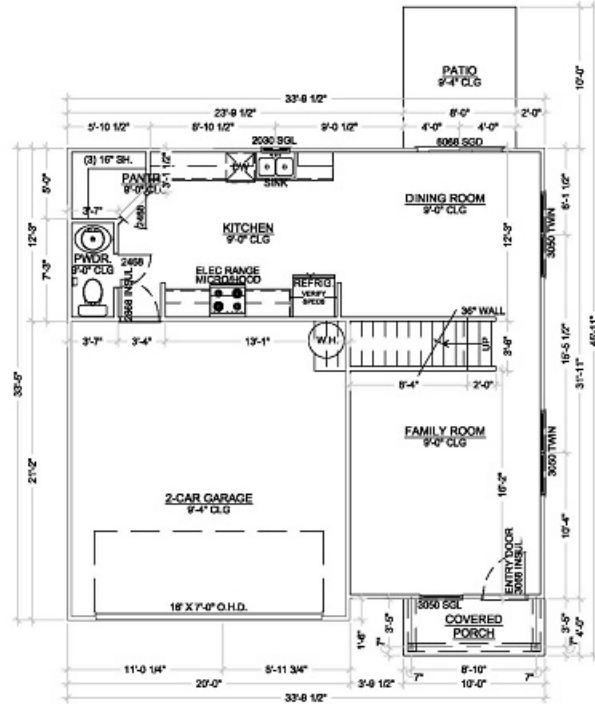
ASH-RE - Fairbanks Plans.dwg CREATED: 2021-07-02 PLOTTED: Thursday, July 29, 2021

FAIRBANKS AREA	
ENTRY LEVEL:	691
UPPER LEVEL:	1062
TOTAL HEATED:	1743
GARAGE:	416
FRONT PORCH:	40
REAR PORCH:	0
TOTAL UNDER ROOF:	2201
PATIO:	80
TOTAL IMPERVIOUS:	1229



UPPER LEVEL FLOOR PLAN

1/8" = 1'-0"



MAIN LEVEL FLOOR PLAN

1/8" = 1'-0"

Copyright ©

All drawings and written material herein constitute the original and sole property of Ashwood Fine Homes, Inc. of Georgia and no part thereof may be duplicated, distributed, disclosed, or used in any manner without written consent. All rights reserved.



225 W. 41ST. ST. UNIT A
SAVANNAH, GA 31401
P. 912.313.8378

FAIRBANKS
FLOOR PLANS
LOT & DEVELOPMENT
ADDRESS LINE #1
ADDRESS LINE #2

DRAWN	DATE
ISSUED	07-22-2021

SHEET

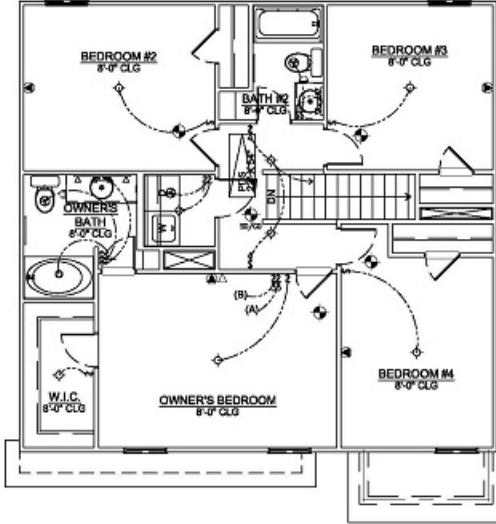
4

ASH-RE - Fairbanks Plans.dwg CREATED: 2021-07-02 PLOTTED: Thursday, July 29, 2021

SYMBOL LEGEND			
◇	FLUSH-MOUNT LIGHT	⊞	SINGLE POLE SWITCH
⊕	HANGING PENDANT	⊞	3-POLE SWITCH
⊞	EXHAUST FAN	⊞	4-POLE SWITCH
⊞	EXHAUST FAN W/ LIGHT	⊞	DIMMER SWITCH
⊞	RECESSED CAN LIGHT	⊞	FAN SWITCH
⊞	INT/EXT WALL SMOKE	⊞	END SWITCH
⊞	LED HDR LAMP	⊞	ELECTRICAL PANEL
⊞	MOTION FLOOD LIGHT	⊞	TELEPHONE
⊞	2X4 FLUORESCENT LIGHT	⊞	TELEPHONE/DATA
⊞	24IN TRACK LIGHT	⊞	DATA
⊞	48IN TRACK LIGHT	⊞	CABLE
⊞	CEILING FAN	⊞	TERMOSTAT
⊞	5-15 NEMA OUTLET	⊞	SD W/ CO DETECTOR
⊞	5-15 NEMA OUTLET	⊞	SMOKE DETECTOR
⊞	SWITCHED 5-15	⊞	HOSE REEL
⊞	GFI OUTLET	⊞	GAS STUB W/ SHUTOFF
⊞	WATER PROOF OUTLET		

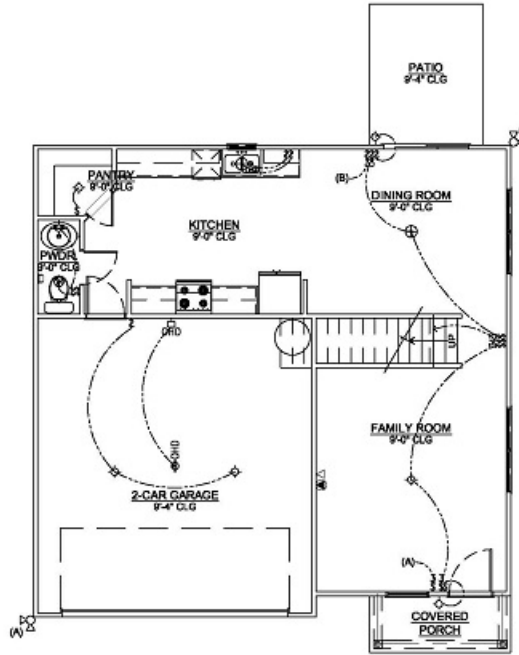
ELECTRICAL NOTES

- 1) ALL ELECTRICAL WORK AND MATERIALS TO BE INSTALLED PER NFPA, NEC, LOCAL, STATE, AND NATIONAL ELECTRICAL CODES
- 2) ALL OUTLETS SHOWN ARE TO BE INSTALLED IN ADDITION TO STANDARD OUTLETS REQUIRED BY CODE.
- 3) IT IS CONTRACTOR'S RESPONSIBILITY TO VERIFY ALL CODES BEFORE INSTALLATION.



UPPER ELECTRICAL & LIGHTING

1/8" = 1'-0"



M.L. ELECTRICAL & LIGHTING

1/8" = 1'-0"

Copyright ©
All drawings and written material herein constitute the original and sole property of Ashwood Fine Homes, Inc. of Georgia and no part thereof may be duplicated, distributed, disclosed, or used in any manner without written consent. All rights reserved.



FAIRBANKS
ELECTRICAL & LIGHTING
LOT & DEVELOPMENT
ADDRESS LINE #1
ADDRESS LINE #2

DRAWN	DATE
ISSUED	07-22-2021
SHEET	

6